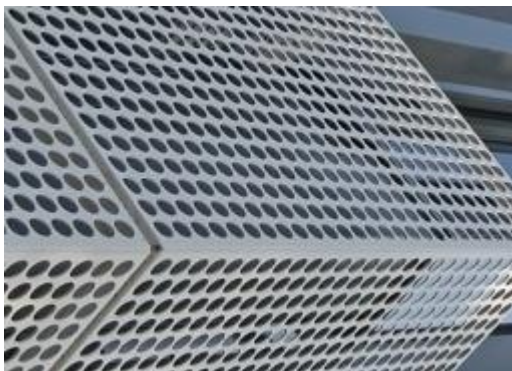


## **BONDING STONE STRIPS OR SMALL TILES WITH TWEHA'S BONDING SYSTEMS**

TWEHA offers certainty and flexibility. With almost 40 years' experience in bonded façade systems, TWEHA is worldwide recognized as a leading player in this field. They have extensively tested and applied their bonding systems on various substrates.

TWEHA introduced bonding stone strips in 2002, so bonding stone strips on backerboards is not new. The cavity remains usable for ventilation and extra thermal insulation. In this way, new and creative architectonic possibilities are created, both in new developments and in renovation, whereby the reduction of weight of the complete structure and rapid processing is of important added value.

Various types and dimensions of stone strips are tested in combination with the most common backerboards, such as the Eter-Backer HD system, Rockpanel Natural, onto concrete and other types of materials.



Or, most common today prefabricated bonded on perforated aluminum façade elements. In what way the ventilation behind the small façade elements is secured.

The conclusion, based on these test results, is that the TWEHA's bonding systems are exceptionally suitable for applying stone strips and other small items.

Furthermore, the adhesive system can be applied very quickly, cleanly and simply. Each type of TWEHA's bonding system makes a good and sustainable bonding of these stone strips or other small items possible.

### **INSTRUCTION FOR USE**

In the event of stone strips you have to take in account, in addition to our 'standard'-Instructions-For-Use, as follows:

A brick or stone strip is more or less a natural product. In light of the production process of facing strips, slight differences in color can be possible in one and the same production series. Always use different packages at the same time and mix to create a beautiful color nuance.

1. Mount the support- or backerboard in the manner prescribed by the supplier of the support board.

2. Determine the height of the courses based on the pattern (shiner, stretcher, header) of the brickwork wanted by using the average height of the delivered stone strips and use a masonry cord for a well-cared result.
3. Clean the backside of the stone strips with a hard brush. Then apply the adhesive. Always hold the caulking gun at right angles to the substrate to be bonded. Use the prescribed nozzle.
4. Press the stone strip gently against the support plate for possible correction. At the moment the strip is correctly positioned it firmly presses the entire surface. In connection with the skin formation on the adhesive, apply the shell within 10 minutes!
5. Fill the joints between the stone strips according to the advice and guidelines of the mortar supplier with a high-quality modified grout. Fill the construction edges and expansion joints with a flexible permanent sealant.

In case of prefabrication, start with step 2 and follow the mounting of the supporting board (step 1) before step 5.

