

#### 4. IMPLEMENTATION OF FAÇADE CONSTRUCTION

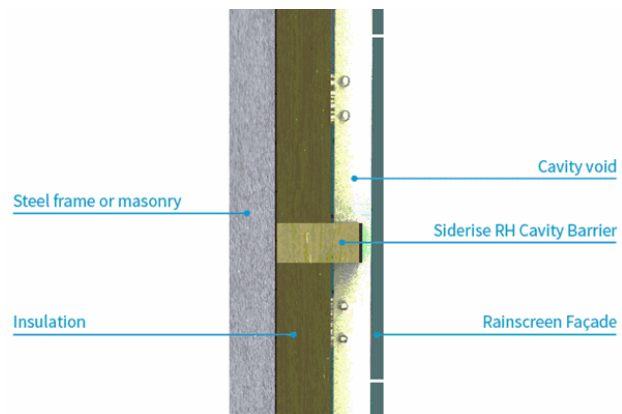
*To ensure fire safety, we must all do our part and make the right choices.*

TWEHA, 2020

##### COMPARTMENTILIZATION BY USING CAVITY-CLOSERS

In order to limit the risk of a fire spreading and the associated smoke development, the building is divided into compartments. A compartment is a part of a building, which may or may not be subdivided into rooms, whose walls, floors and ceilings prevent fire from spreading to adjacent compartments for a certain period of time.

Compartmentalization is also crucial to safeguard escape routes.



In order to frustrate fire propagation in the facade construction, it is advisable, and in some countries already an obligation, to also implement this philosophy of compartmentalization in the ventilated facade construction. In addition to using a facade construction with sufficient fire resistance, this means that the structural function of the facade construction is maintained for longer and the speed of fire spreading is frustrated.

##### IMPLEMENTATION

In the light of fire resistance, facade constructions are considered and tested as one total construction.

During the execution it is therefore extremely important that the execution of the facade construction is carried out entirely in accordance with the instructions of the manufacturer(s) and any additions based on the fire test report. Only then the proposed fire resistance is guaranteed.

If the prescribed details are not followed, this can destroy the fire resistance of the entire facade construction. And when materials are not delivered, or an alternative, the architect and / or constructor involved will have to give an opinion about this.



##### CHECK

In addition to a thorough inspection by the architect and / or the inspection office upon delivery, interim inspections are also recommended when mounting the facade construction. It is not so much the materials

themselves that have to be checked, but rather whether the detailing has been properly followed. Connections between the various parts and materials are important points of attention in this respect. You should therefore always check whether they have been installed in accordance with the manufacturer's installation instructions.

##### DECLARATION OF QUALITY

In order to demonstrate that the facade construction has been carried out in accordance



with the predetermined guidelines, the (sub) contractor must declare that the facade construction meets the set quality requirements. We recommend that you request this from the (sub) contractor at all times.

Read more:

**'LINK FIRE PREVENTION TO FAÇADE CLADDING'**

**'POSSIBLE FIRE-RISK-TAKING MOVEMENTS VIA THE FAÇADE'**

**'AVOIDING FIRE MOVEMENTS VIA THE AIR CAVITY BY USING CAVITY-CLOSERS'**